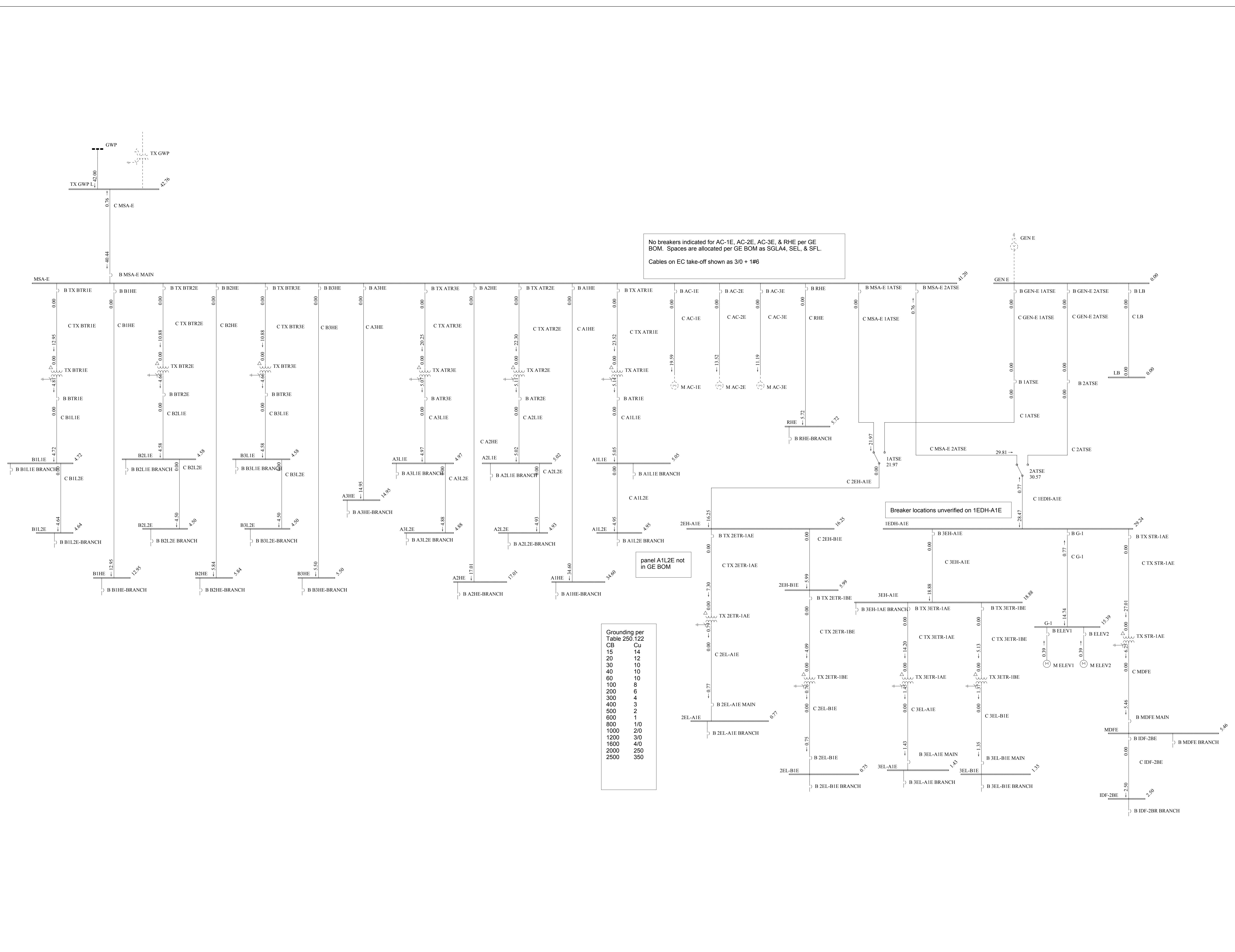


Single Line Diagrams

East Building

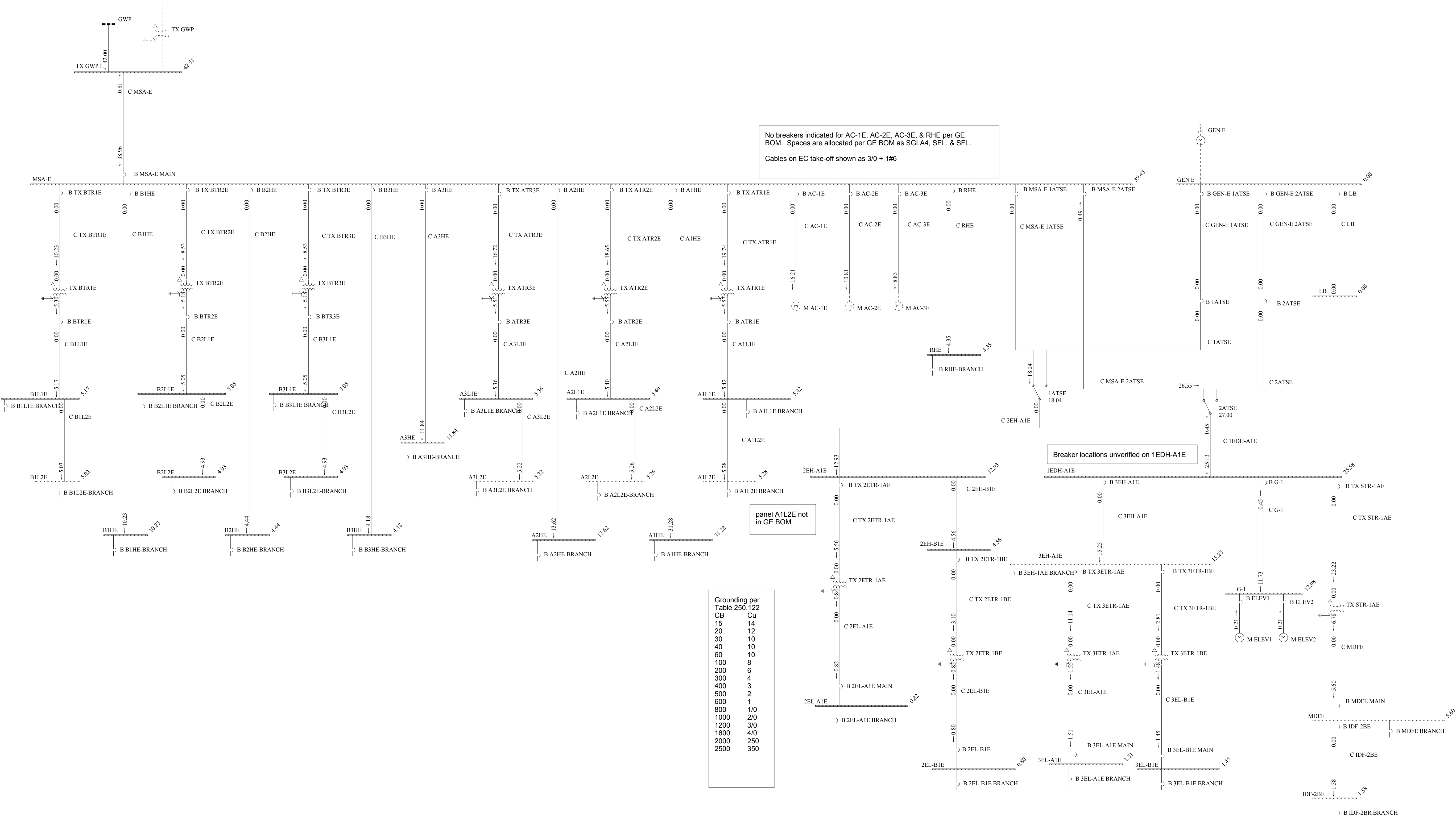


No breakers indicated for AC-1E, AC-2E, AC-3E, & RHE per GE BOM. Spaces are allocated per GE BOM as SGLA4, SEL, & SFL.
Cables on EC take-off shown as 3/0 + 1#6

Breaker locations unverified on 1EDH-A1E

panel A1L2E not in GE BOM

Grounding per Table 250.122	
CB	Cu
15	14
20	12
30	10
40	10
60	10
100	8
200	6
300	4
400	3
600	2
800	1/0
1000	2/0
1200	3/0
1600	4/0
2000	250
2500	350



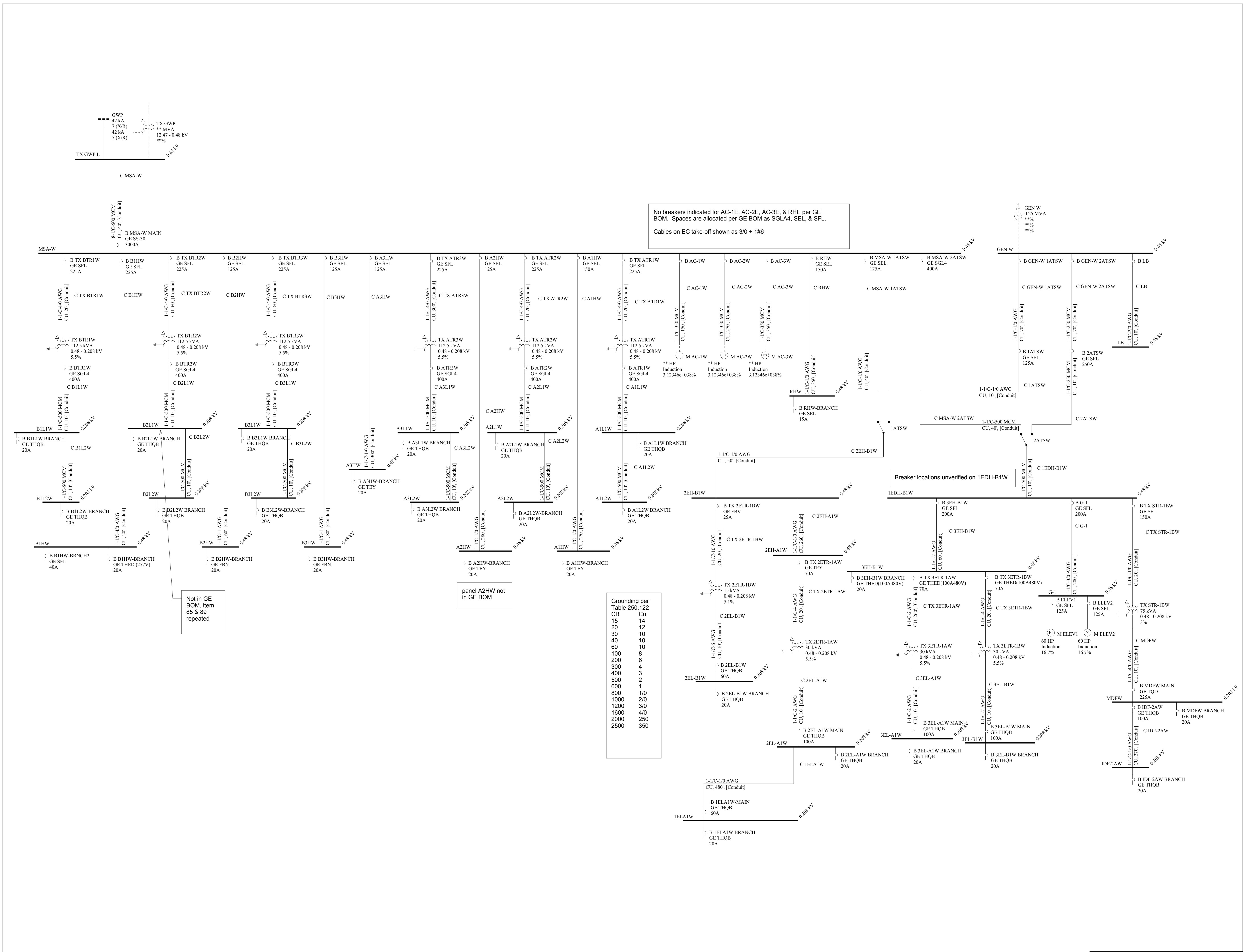
No breakers indicated for AC-1E, AC-2E, AC-3E, & RHE per GE BOM. Spaces are allocated per GE BOM as SGLA4, SEL, & SFL.
Cables on EC take-off shown as 3/0 + 1#6

Breaker locations unverified on 1EDH-A1E

panel A1L2E not in GE BOM

Grounding per Table 250.122	
CB	Cu
15	14
20	12
30	10
40	10
60	10
100	8
200	6
300	4
400	3
600	1
800	1/0
1000	2/0
1200	3/0
1600	4/0
2000	250
2500	350

West Building



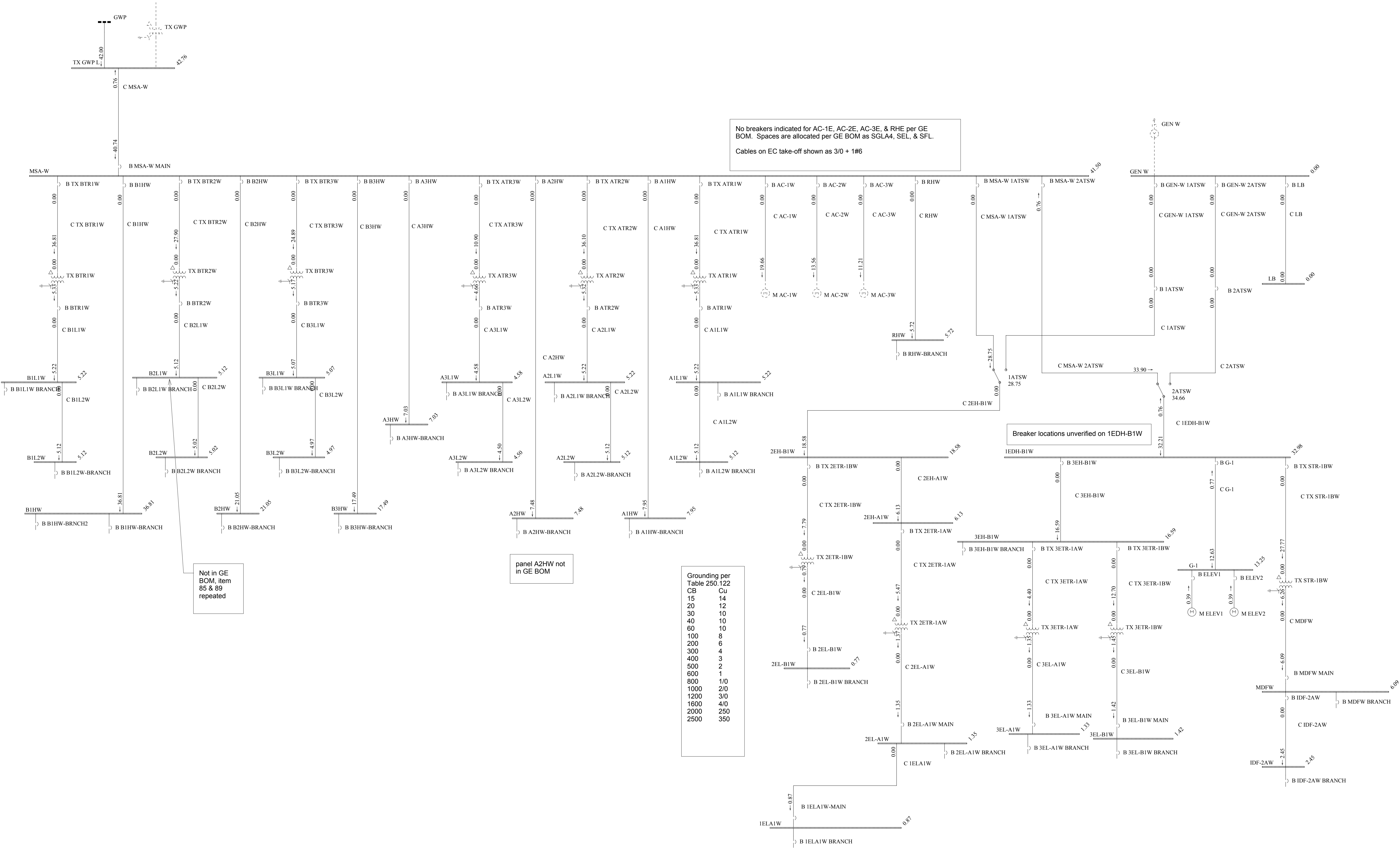
No breakers indicated for AC-1E, AC-2E, AC-3E, & RHE per GE BOM. Spaces are allocated per GE BOM as SGLA4, SEL, & SFL.
Cables on EC take-off shown as 3/0 + 1#6

Not in GE BOM, item 85 & 89 repeated

panel A2HW not in GE BOM

Grounding per Table 250.122

CB	Cu
15	14
20	12
30	10
40	10
60	10
100	8
200	6
300	4
400	3
500	2
600	1
800	1/0
1000	2/0
1200	3/0
1600	4/0
2000	250
2500	350



No breakers indicated for AC-1E, AC-2E, AC-3E, & RHE per GE BOM. Spaces are allocated per GE BOM as SGLA4, SEL, & SFL.
 Cables on EC take-off shown as 3/0 + 1#6

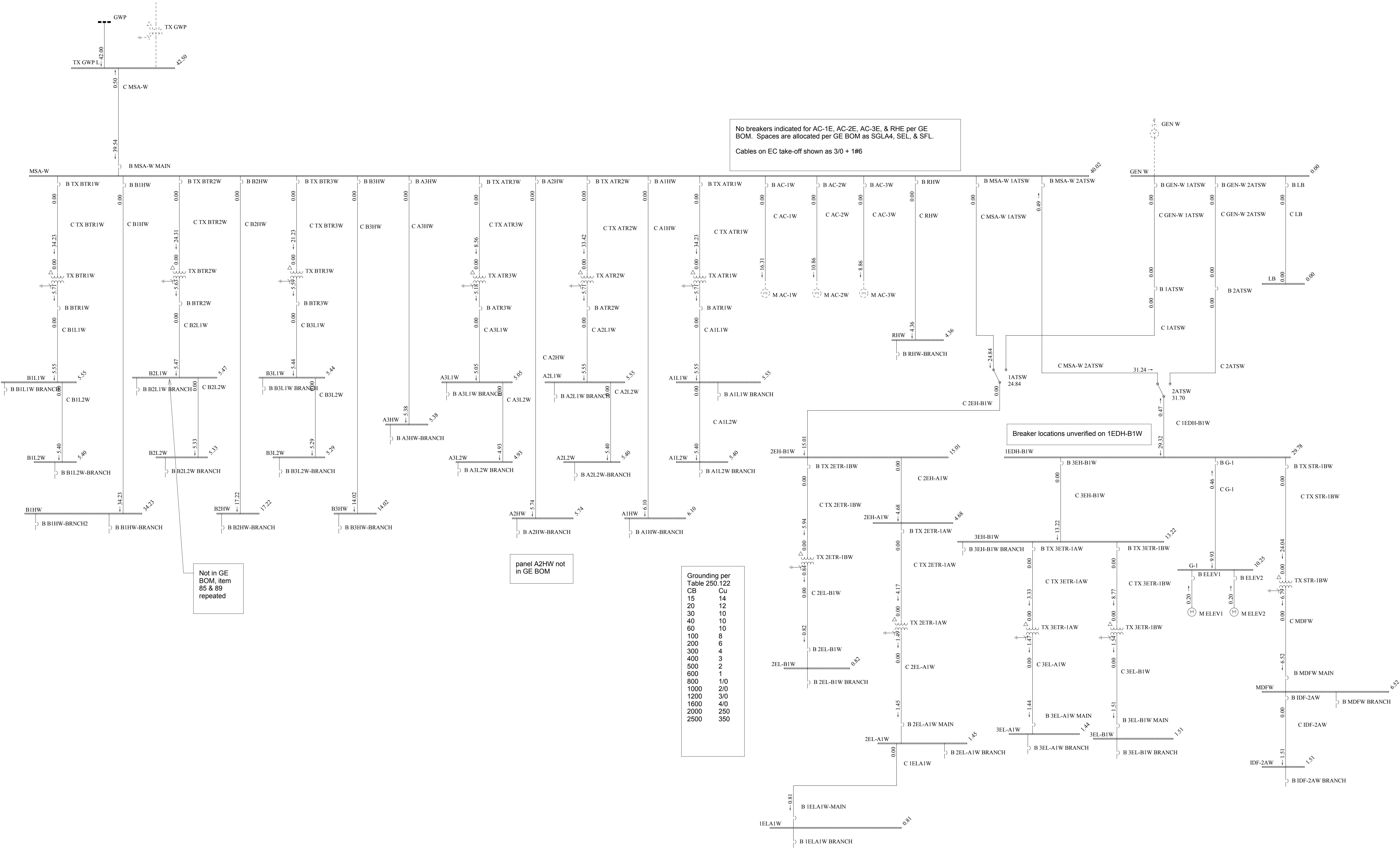
Not in GE BOM, item 85 & 89 repeated

panel A2HW not in GE BOM

Grounding per Table 250.122

CB	Cu
15	14
20	12
30	10
40	10
60	10
100	8
200	6
300	4
400	3
500	2
600	1
800	1/0
1000	2/0
1200	3/0
1600	4/0
2000	250
2500	350

Breaker locations unverified on 1EDH-B1W



No breakers indicated for AC-1E, AC-2E, AC-3E, & RHE per GE BOM. Spaces are allocated per GE BOM as SGLA4, SEL, & SFL.
Cables on EC take-off shown as 3/0 + 1#6

Not in GE BOM, item 85 & 89 repeated

panel A2HW not in GE BOM

Grounding per Table 250.122

CB	Cu
15	14
20	12
30	10
40	10
60	10
100	8
200	6
300	4
400	3
500	2
600	1
800	1/0
1000	2/0
1200	3/0
1500	4/0
2000	250
2500	350